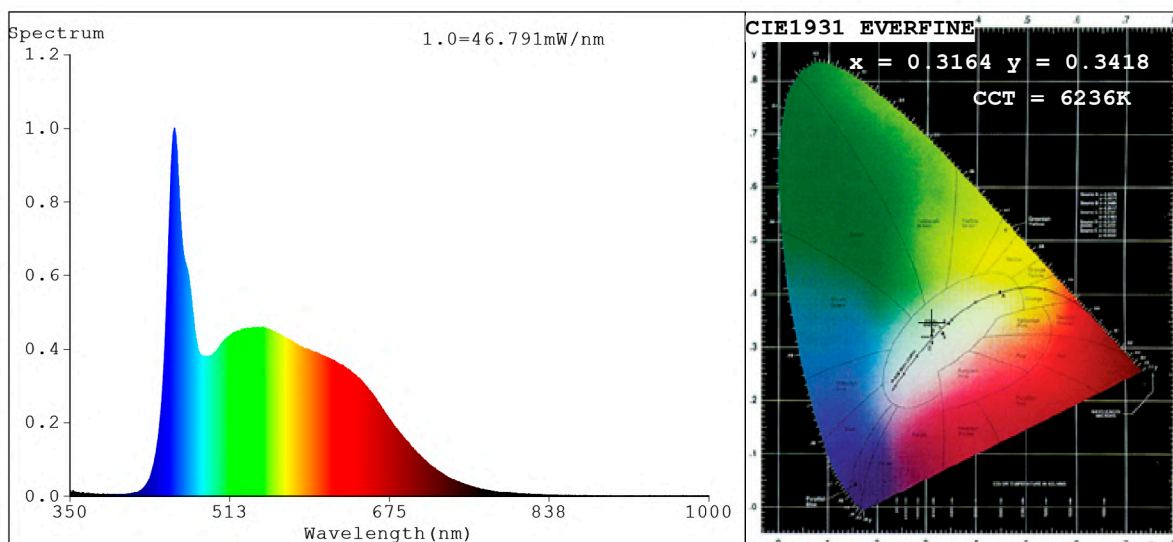


Spectrum Test Report



Color Parameters:

Chromaticity Coordinate: $x=0.3164$ $y=0.3418$ $u'=0.1957$ $v'=0.4755$
 CCT=6236K (Duv=0.0078) Dominant WL: $\lambda_d = 498.2\text{nm}$ Purity=5.3%
 Ratio: R=14.9% G=77.9% B=7.2%; Peak WL: $\lambda_p = 456.4\text{nm}$ FWHM=27.1nm
 Render Index: Ra=91.3 CRI=88.6 TM30: Rf=87 Rg=95
 R1 =93 R2 =98 R3 =96 R4 =85 R5 =90 R6 =96 R7 =89
 R8 =85 R9 =69 R10=96 R11=87 R12=65 R13=95 R14=98 R15=89

Photo Parameters:

Flux = 1442 lm Eff. : 99.84 lm/W Fe = 5.142 W Scotopic: 3488.5 S/P: 2.4195

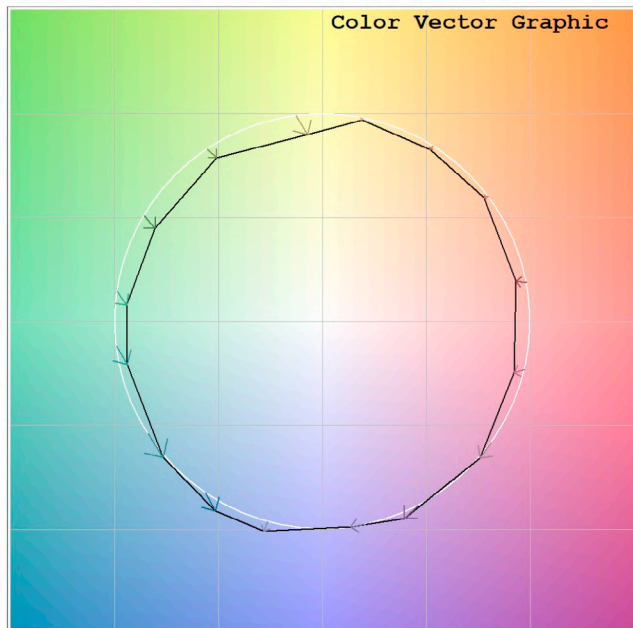
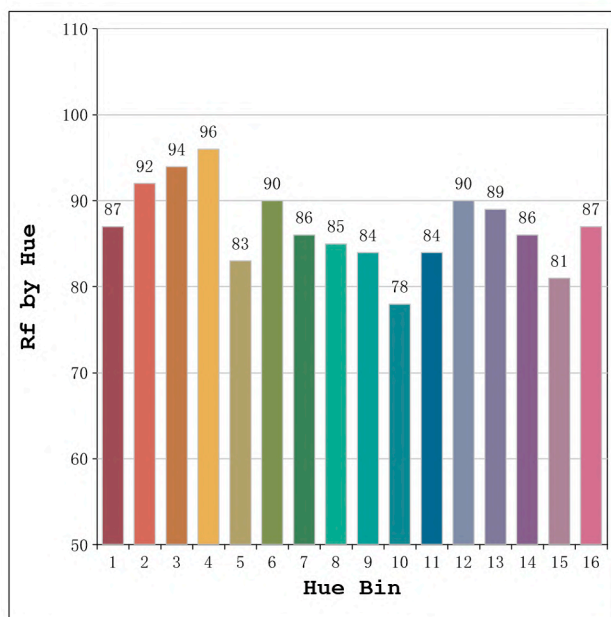
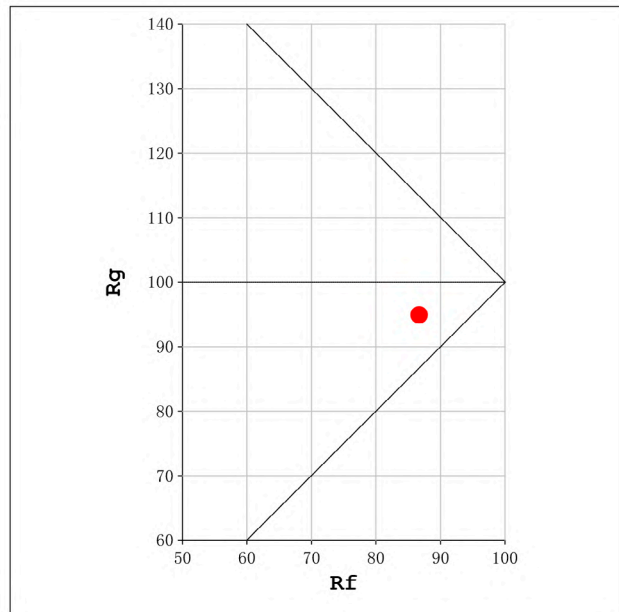
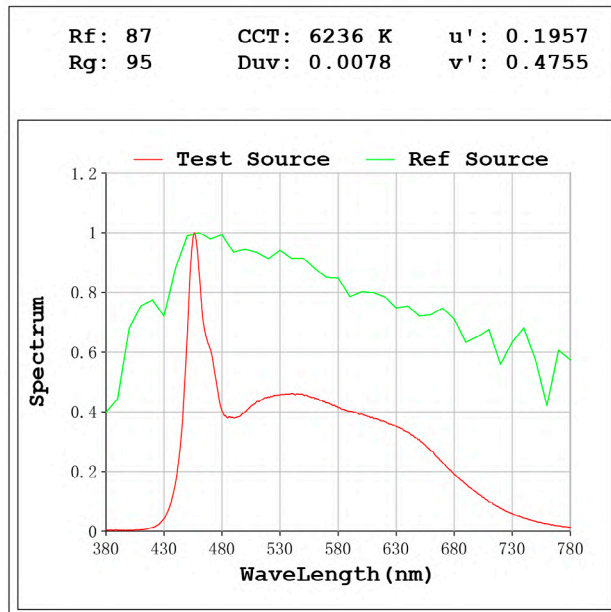
Electrical parameters:

V = 23.998 V I = 0.6018 A P = 14.44 W PF = 1.000

Status: Integral T = 500 ms Ip = 38768 (59%)

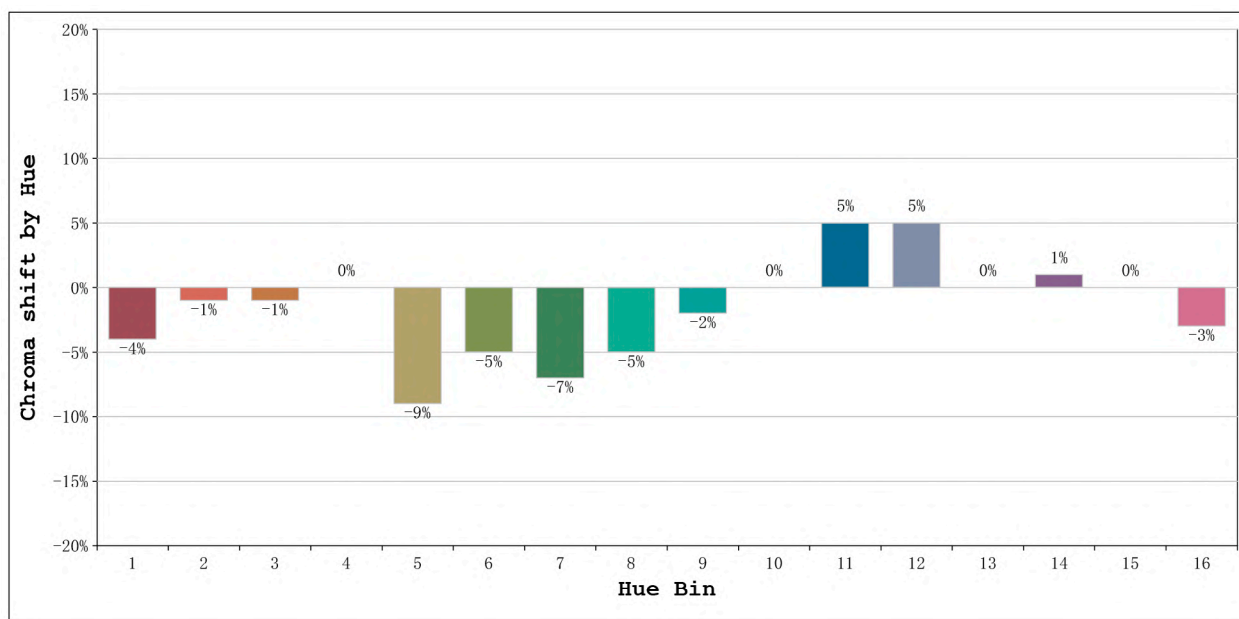
Model: Ecoled COB 6500K
 Tester: Sergio Carneros
 Temperature: 13Deg
 Manufacturer: Luz Negra

Number: 31.001
 Date: 25-5-2021
 Humidity: 57%
 Remarks: 100cm de tira flexible



Model:Ecoled COB 6500K
 Tester:Sergio Carneros
 Temperature:13Deg
 Manufacturer:Luz Negra

Number: 31.001
 Date:25-5-2021
 Humidity:57%
 Remarks:100cm de tira flexible



Hue Bin	Hue Angle	Rf	Graphic shift(%)	
			Chroma	Hue
1	0.0° - 22.5°	87	-4	2
2	22.5° - 45.0°	92	-1	1
3	45.0° - 67.5°	94	-1	0
4	67.5° - 90.0°	96	0	0
5	90.0° - 112.5°	83	-9	-3
6	112.5° - 135.0°	90	-5	0
7	135.0° - 157.5°	86	-7	2
8	157.5° - 180.0°	85	-5	6
9	180.0° - 202.5°	84	-2	10
10	202.5° - 225.0°	78	0	14
11	225.0° - 247.5°	84	5	9
12	247.5° - 270.0°	90	5	0
13	270.0° - 292.5°	89	0	-6
14	292.5° - 315.0°	86	1	-8
15	315.0° - 337.5°	81	0	-8
16	337.5° - 360.0°	87	-3	-2

Model:Ecoled COB 6500K
 Tester:Sergio Carneros
 Temperature:13Deg
 Manufacturer:Luz Negra

Number: 31.001
 Date:25-5-2021
 Humidity:57%
 Remarks:100cm de tira flexible